



**MAHIMA GROUP**  
Committed to Excellence



**MAHIMA**  
**sansaar**

2, 3 BHK RESIDENCES  
MAIN TONK ROAD, SAHARA CITY, JAIPUR

Phase-I RERA Reg. No. : RAJ/P/2017/202

# GET EVERYTHING AROUND YOU. AND, CALL IT A WORLD.



Artistic impression of aerial view

MAHIMA SANSAAH IS AN AMBITIOUS ATTEMPT TO BRING VARIOUS INGREDIENTS OF A HAPPENING LIFE TOGETHER TO CREATE A DEFINING LIVING EXPERIENCE. THE CORE PHILOSOPHY OF SANSAAH ILLUSTRATES DESIROUS VALUES AT THE BACKDROP OF REAL TIME ACTIVE AMENITIES. APART FROM A FULLY LOADED LIST OF LIFESTYLE AMENITIES, SANSAAH HAS AN ARRAY OF OUTDOOR SPORTS FOR SPORTS AFICIONADOS, FOR LARGER-THAN-LIFE CELEBRATIONS, THERE IS CELEBRATION SQUARE AND IN ONE OF THE INDUSTRY FIRSTS, THERE IS PROVISION FOR COMMUNITY FARMING. WHAT'S MORE, MAHIMA SANSAAH IS LOCATED AT THE THRIVING LOCATION OF TONK ROAD WHICH IN ITSELF IS THERE IN THE WISH LIST OF MANY HOME SEEKERS. IT'S NOT AN EXAGGERATION TO SAY THAT MAHIMA SANSAAH IS TRUE TO ITS NAME FOR ALL THE GOOD REASONS IT CAN OFFER.





# Here our mornings are healthy and beautiful.

Unlike many, our mornings are peaceful and full of energy. There are yoga, jogging and some great moments of caring and sharing in our morning schedule.





We have  
sports  
all around us.  
Isn't it  
exciting.

We have many sports to choose from.  
It fills joy and thrill in our day-to-day lives.  
It's so good that everyone in my family  
has a sport to play.





---

50,000 Sq. Ft. Clubhouse

---

Cricket Ground with Floodlights

---

Swimming Pool

---

Celebration Square

---

Organic Community Farming

---

Covered Badminton Courts

---

---

Tennis Court

---

Cafeteria

---

Football Ground

---

Basketball Court

---

76% Landscaped Area

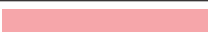




---





PHASE - 1

AREA TABLE

COLOR	TYPE	S.B.U.A (SQ.FT.)	CARPET AREA (SQ.FT.)	B.U.A (SQ.FT.)
	2 BHK (OPTIMA 1)	800	524.20	625
	2 BHK (OPTIMA 2)	980	635.17	765.62
	3 BHK (ULTIMA 1)	1190	799.21	929.68
	3 BHK (ULTIMA 2)	1360	909.54	1062.25
	3 BHK (ULTIMA 3)	1580	1034.30	1234.37





Our  
clubhouse is  
happening  
and  
everyone's  
favourite.

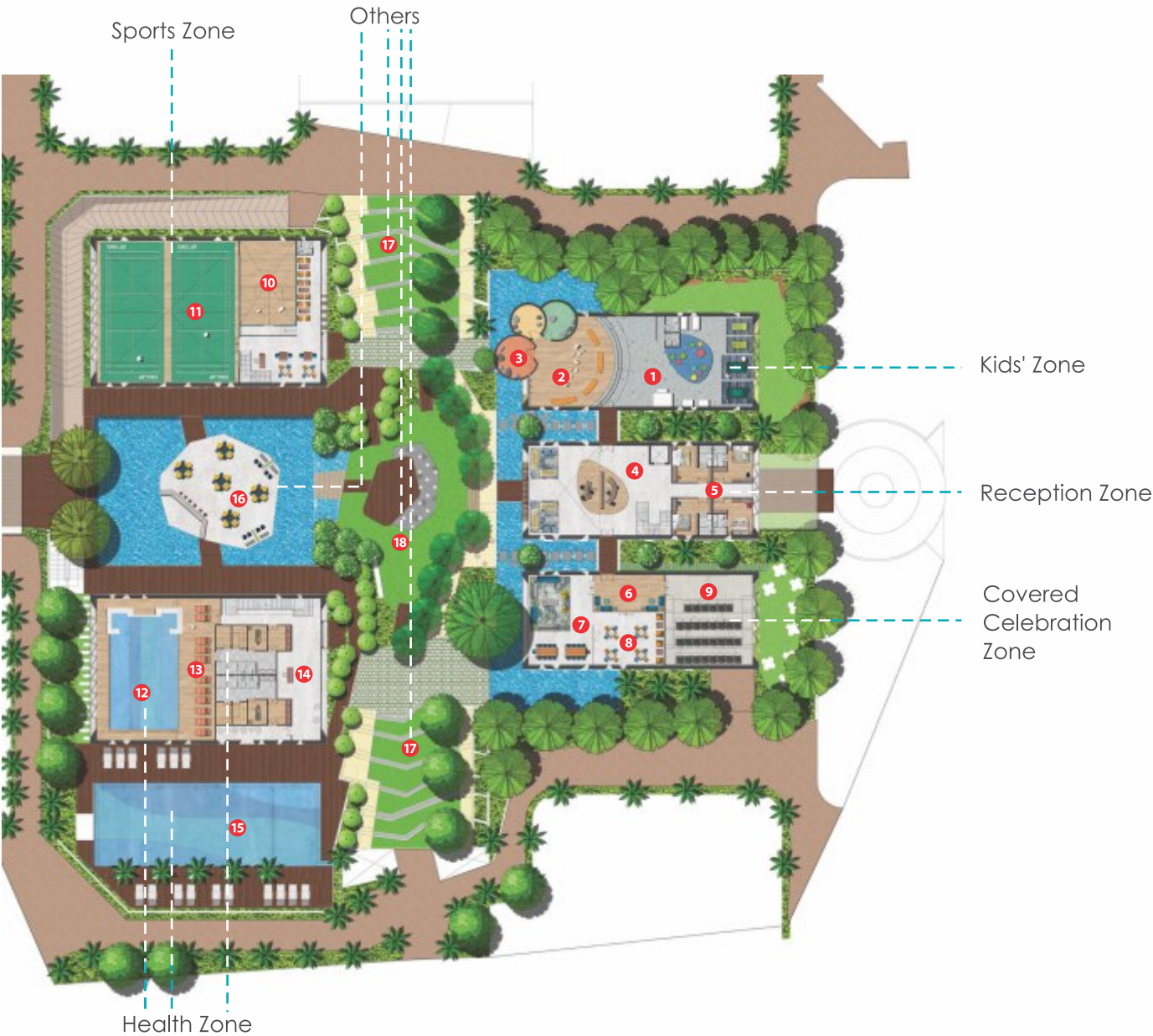
If you see our clubhouse,  
you will be amazed. It's big and full of  
so many things that are not only great  
but also inviting.





# CLUBHOUSE PLAN

## Lower Ground Floor Zones



### Legend

#### KIDS' ZONE

- 1. Games room
- 2. Music / Dance room
- 3. Interactive room

#### HEALTH ZONE

- 12. Kids' / Ladies pool
- 13. Deck
- 14. Spa
- 15. Outdoor pool

#### RECEPTION ZONE

- 4. Reception
- 5. Guest rooms

#### OTHERS

- 16. Restaurant
- 17. Amphitheatre
- 18. Celebration square

#### COVERED CELEBRATION ZONE

- 6. Waiting area
- 7. Kitty area
- 8. Cards room
- 9. Mini theatre

#### SPORTS ZONE

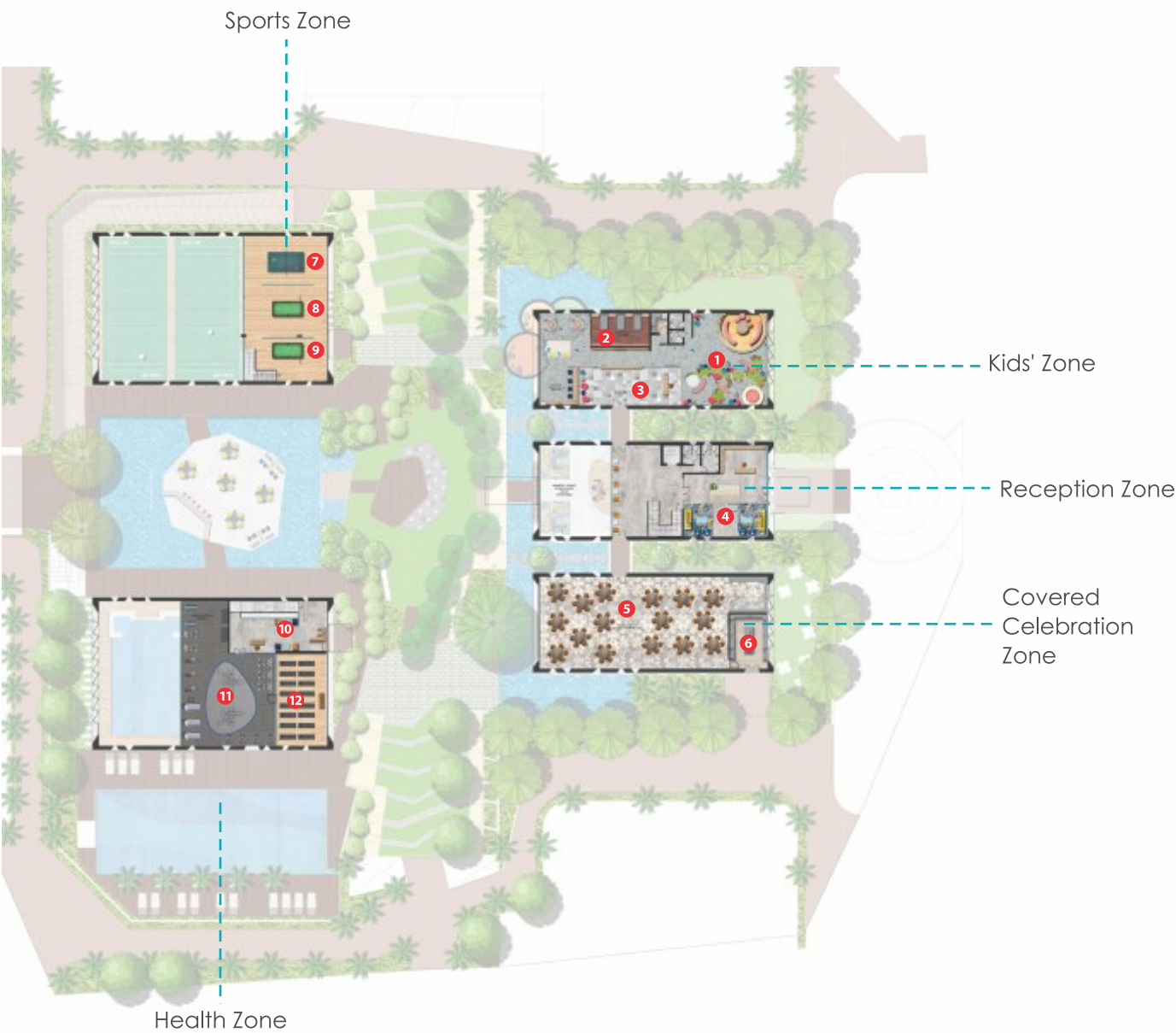
- 10. Squash court
- 11. Badminton courts





# CLUBHOUSE PLAN

## Ground Floor Zones



### Legend

#### KIDS' ZONE

- 1. Jungle theme - kids' area
- 2. Snooze room
- 3. Dramatic area

#### RECEPTION ZONE

- 4. Reading lounge

#### COVERED CELEBRATION ZONE

- 5. Multi-purpose hall
- 6. Kitchen

#### SPORTS ZONE

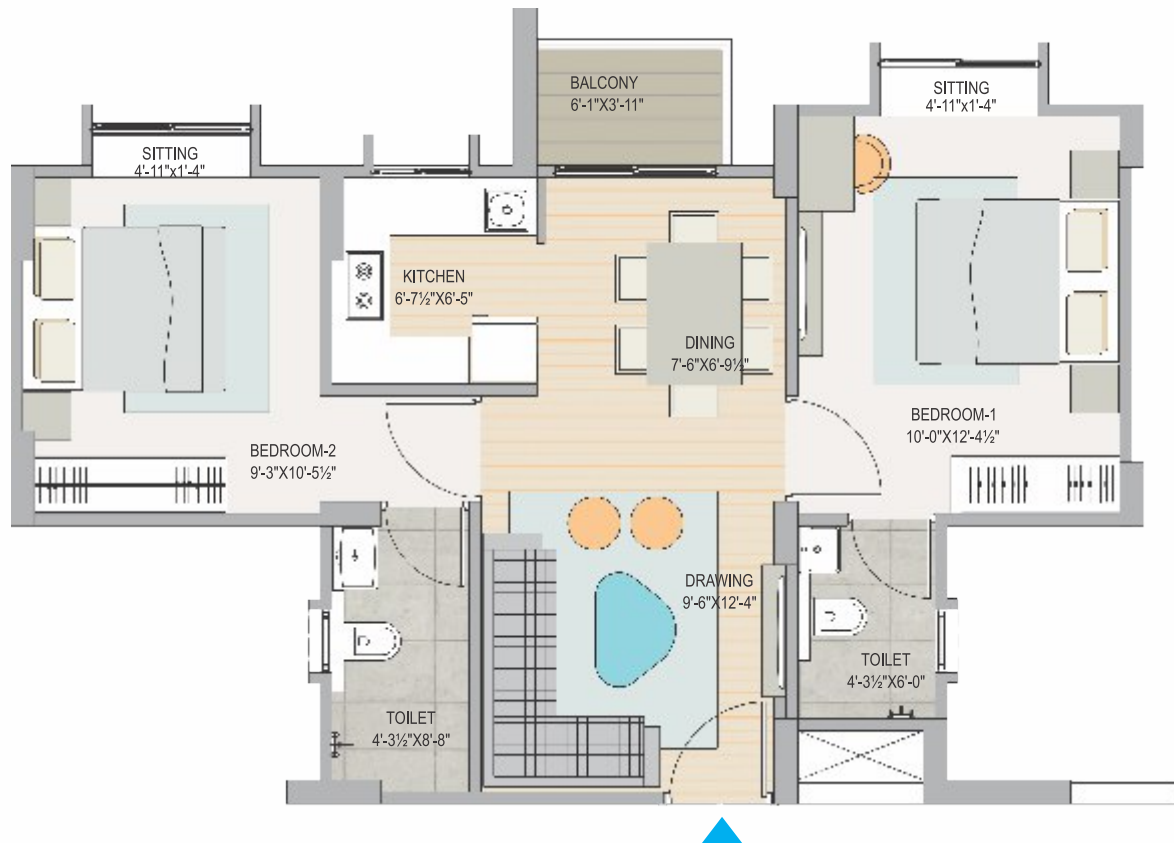
- 7. Table tennis room
- 8. Snooker table
- 9. Pool table

#### HEALTH ZONE

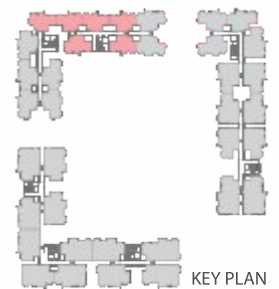
- 10. Waiting area
- 11. Gymnasium
- 12. Yoga room



# UNIT PLAN



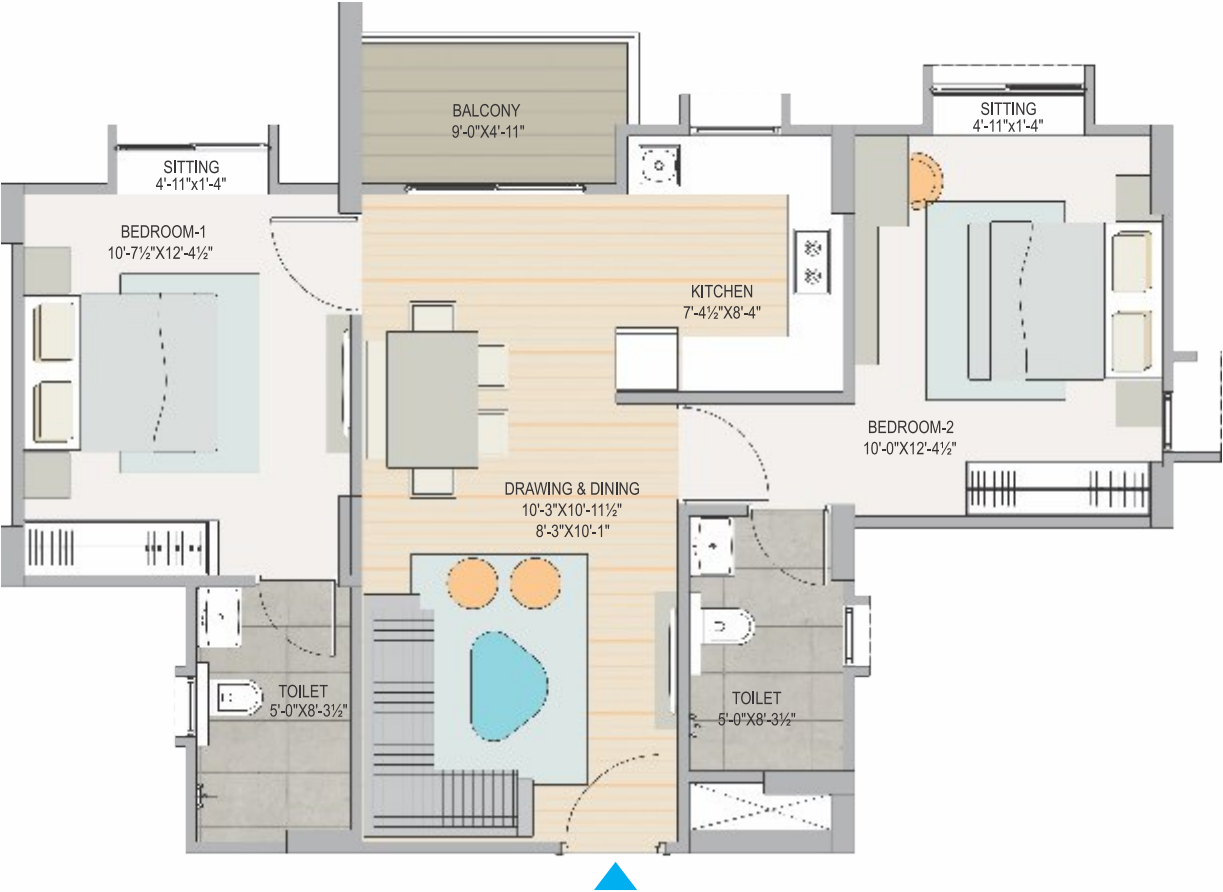
2 BHK (OPTIMA 1)



**S.B.U.A: 800 Sq. Ft.** | Carpet Area: 524.20 Sq. Ft. | B.U.A: 625 Sq. Ft.



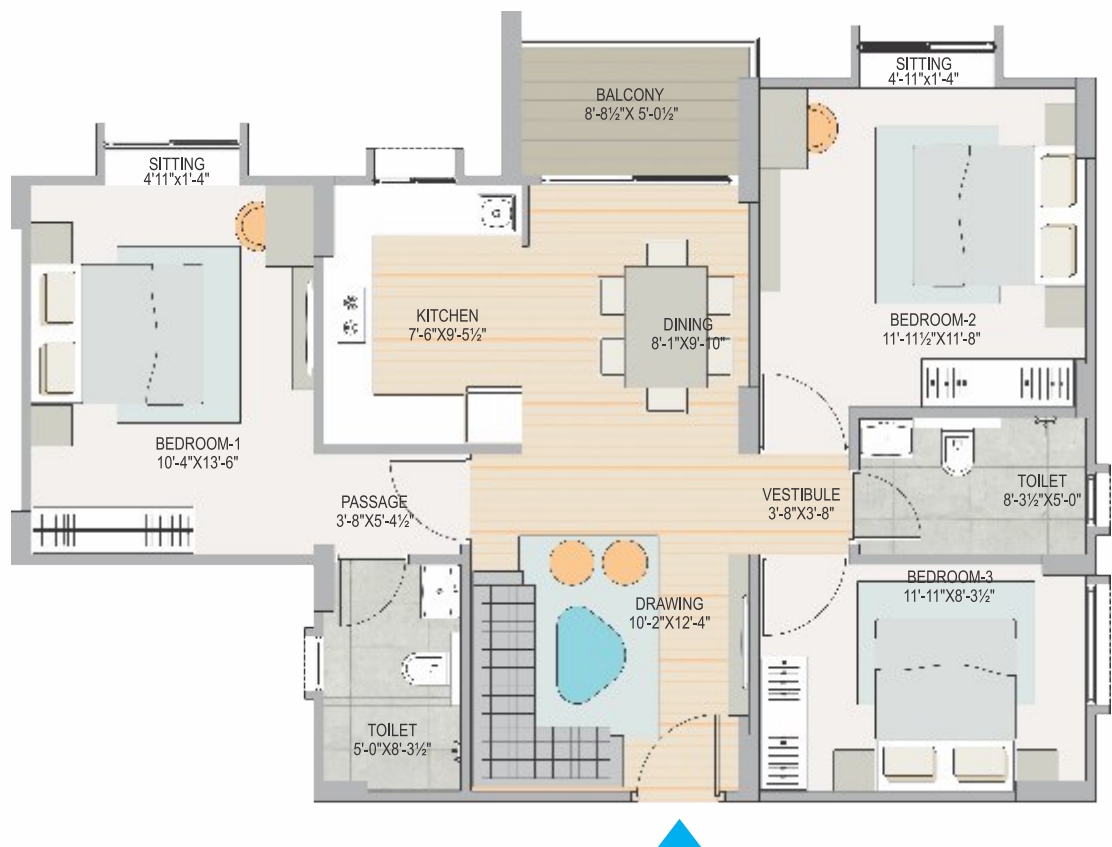
# UNIT PLAN



2 BHK (OPTIMA 2)

S.B.U.A: 980 Sq. Ft. | Carpet Area: 635.17 Sq. Ft. | B.U.A: 765.62 Sq. Ft.

# UNIT PLAN

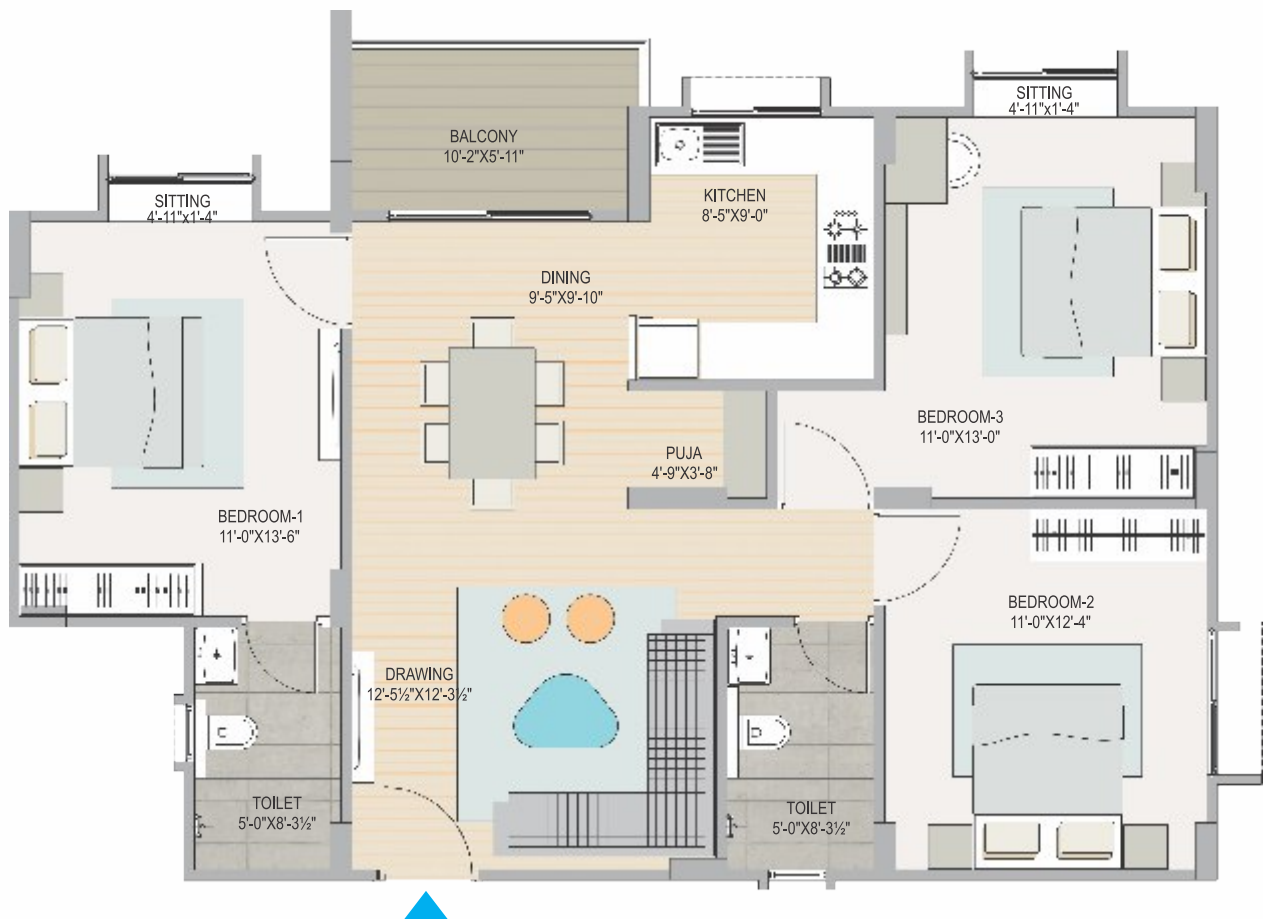


3 BHK (ULTIMA 1)

S.B.U.A: 1190 Sq. Ft. | Carpet Area: 799.21 Sq. Ft. | B.U.A: 929.68 Sq. Ft.



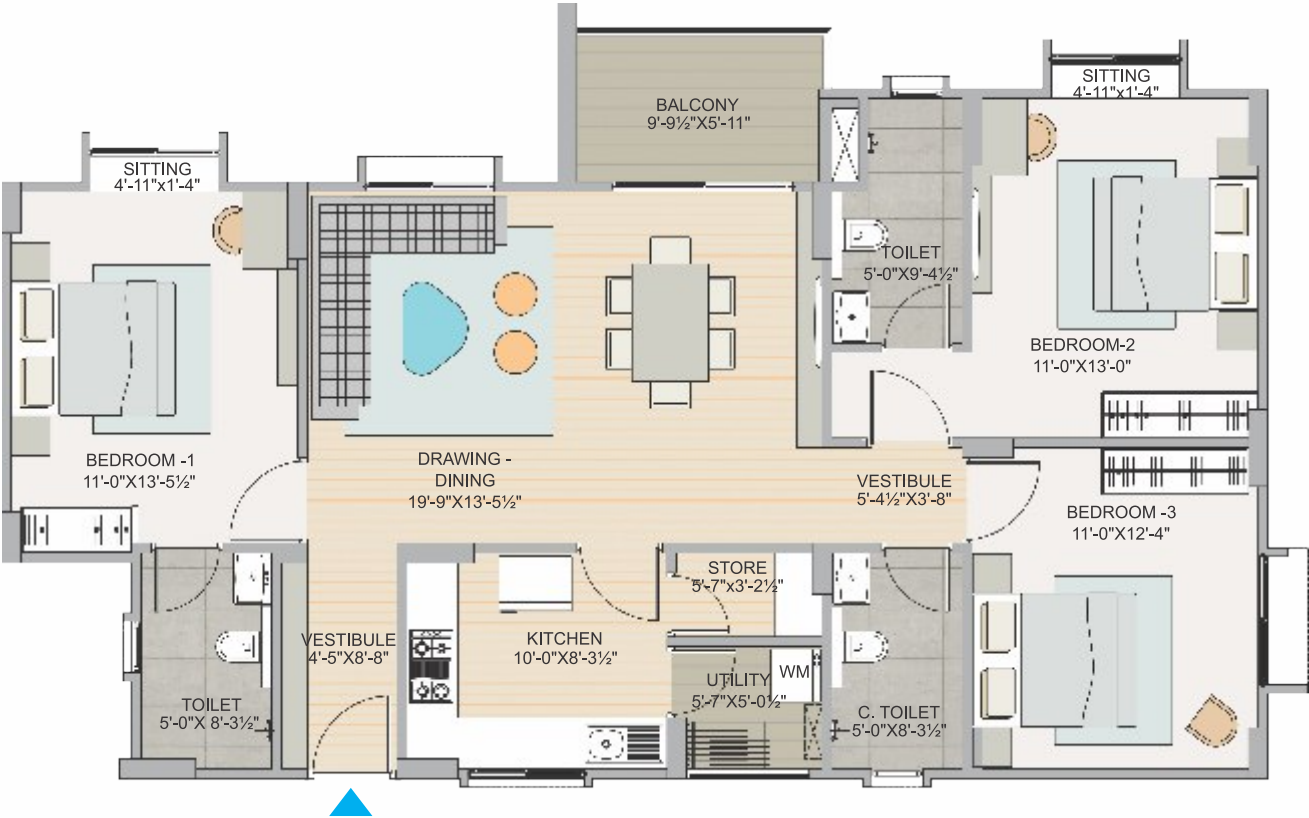
# UNIT PLAN



3 BHK (ULTIMA 2)

**S.B.U.A: 1360 Sq. Ft.** | Carpet Area: 909.54 Sq. Ft. | B.U.A: 1062.25 Sq. Ft.

# UNIT PLAN

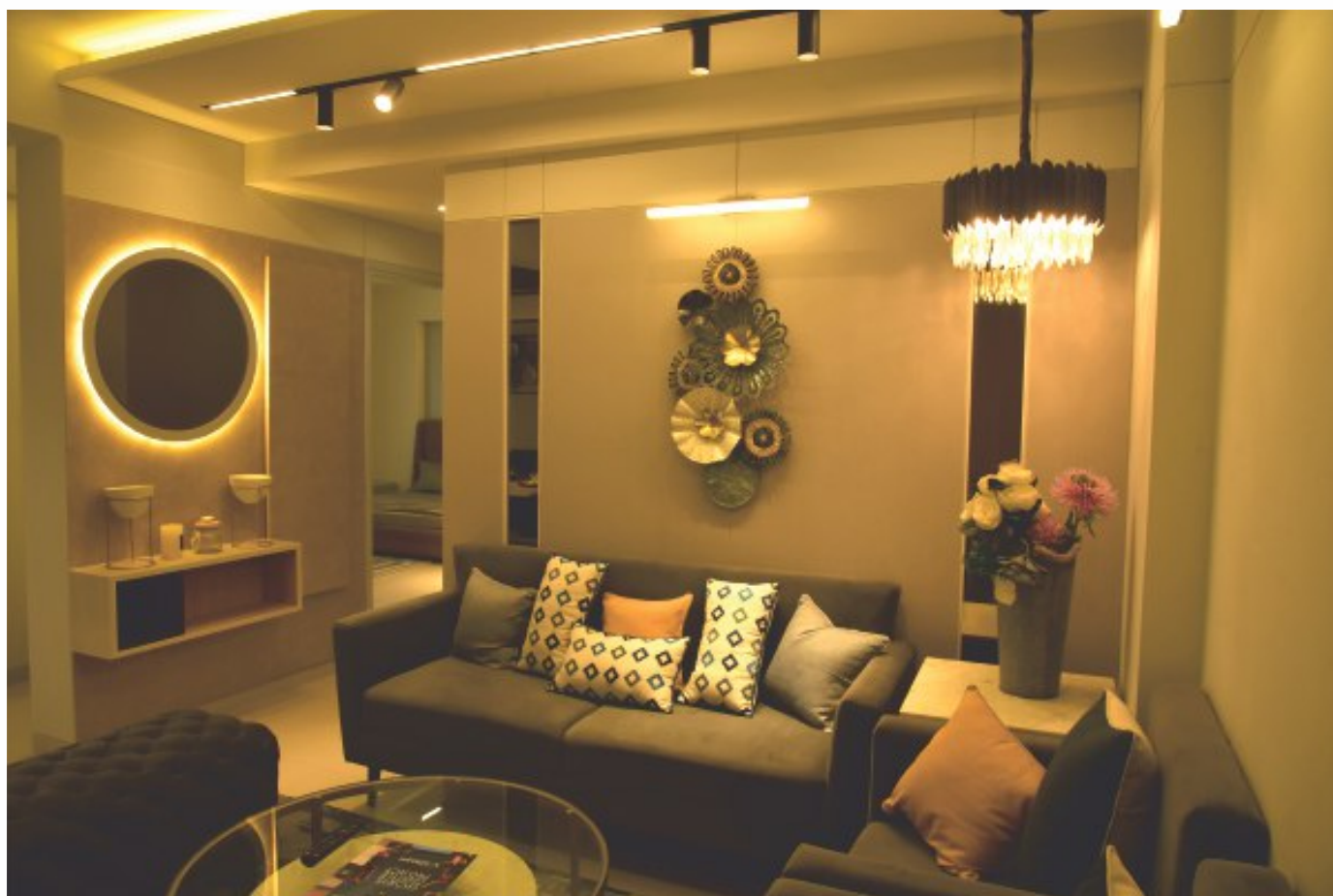


3 BHK (ULTIMA 3)

S.B.U.A: 1580 Sq. Ft. | Carpet Area: 1034.34 Sq. Ft. | B.U.A: 1234.37 Sq. Ft.



## SAMPLE FLAT



## SAMPLE FLAT





# SPECIFICATIONS

## LIVING/DINING

Flooring	Vitrified flooring
Skirting	Vitrified profile
Wall Finishes	Plaster with POP and O.B.D.
Ceiling	Plaster with POP and O.B.D.

## MASTER BEDROOM

Flooring	Vitrified flooring
Skirting	Vitrified profile
Wall Finishes	Plaster with POP and O.B.D.
Ceiling	Plaster with POP and O.B.D.

## OTHER BEDROOMS

Flooring	Vitrified flooring
Skirting	Vitrified profile
Wall Finishes	Plaster with POP and O.B.D.
Ceiling	Plaster with POP and O.B.D.

## TOILETS

Flooring	Anti-skid ceramic tiles
Wall Finish	Ceramic tiles up to 7'-0" height & rest plaster with POP & O.B.D.
Ceiling	Plaster with POP and O.B.D.
Sanitary Fittings & CP Fittings	European wall hung WC, under/over Counter basin/basin with pedestal in all the toilets of renowned brands like Kohlar/Jaquar/Roca or equivalent. Brushed steel finish C.P. fixtures of renowned brands like Kohler/Jaquar/Roca or equivalent.
Hygiene	Separate dry and wet areas

## KITCHEN

Flooring	Floor with vitrified/Anti-Skid Matt finish tiles
Skirting	Tile profile
Wall Finishes	Plaster with POP and O.B.D.
Wall Tiles	Tiles upto 2' height above counter top
Counter Top	Premium granite
Sink	Stainless steel sink with drain board
CP Fittings	Brushed steel finish sink mixer

## BALCONY

Flooring	Anti-skid ceramic tiles
Skirting	Tile profile
Hand Rail	M.S. railing with enamel paint satin finish

## DOORS AND WINDOWS

Main Door	Flush door with Veneer/Laminate on both sides/readymade designer doors or equivalent
Other Doors	Readymade designer doors/flush doors or equivalent
Windows	Aluminium powder coated/UPVC.
Ventilators	Aluminium powder coated/UPVC.

## COMMON LOBBY

Flooring	Anti-skid premium class tiles/natural stone
Skirting	Tile/Marble profile
Wall Finishes	Plaster with POP and O.B.D.
Ceiling	Plaster with POP and O.B.D.

## STAIRCASE

Riser and Tread	Natural stone/tiles
Hand Rail	M.S. railing with satin finish enamel paint

## COMMON FACILITIES

### SERVICES

- Power back-up for Common services
- Gas bank
- Garbage collection point
- Wi-fi club building
- Land line/intercom facility
- Provision for DTH
- CCTV at entrance
- Car washing area
- Lifts
- Rain water harvesting system
- Sewerage treatment plant

### STRUCTURE

- Earthquake resistant structure
- OH water tank for potable water & separate OH water tank for flushing water (treated)
- Energy efficient, green eco-friendly nominal design, centralized grouped location of services installation to ensure easy maintenance, state-of-the-art technology, fast track installation and compliance to all statutory regulations

### ELECTRICALS

- High side electrical equipment-transformer, panels etc of requisite designed capacity
- Electrical fittings & concealed copper wiring in PVC conduit
- Separate Meter for Lighting in Common Areas, Elevators and Pumps
- 16 Amps sockets for geysers in toilets and 25 Amps sockets for air-conditioners in all bedrooms
- Adequate nos. of 6 Amps sockets & 16 Amps sockets in kitchen
- Adequate 16 Amps plug sockets in each room. Multiple sockets in living room for connections to TV, stereo and other equipment
- One calling bell along with bell push

# THE GROUP



Mahima Group is the pioneer of real estate in Rajasthan with 32 years of strong presence across various verticals of infrastructure development. The group boasts a highly motivated team of more than 300+ professionals working in various capacities to realise the larger vision in its true sense. In its existence of more than 3 decades, Mahima Group has successfully delivered 4650 residential and commercial units that cover 8 million sq. ft. of development. In commercial development 4 large commercial malls were delivered that houses more than 100+ renowned national and international brands. The extended Mahima family includes 5500+ happy families that are residing in various projects of the group. Currently Mahima Group is developing 3.16 million sq. ft. of space that includes 1875 units across 6 ongoing projects. The group also runs 360 degree facility and project cycle management services that maintain its various completed projects in a very efficient and professional way. With a passion to bring about a meaningful change in the lifestyle of contemporary society, Mahima is on a mission called “Constructing Your World”.

## Benefits of buying a home from Mahima Group



32 years of excellence  
in real estate industry



Committed to  
on-time delivery



Options to choose your home loan  
provider as per your requirement



Choose from  
wide range of apartments



Safe & secure environment  
in all the projects



Free interior designing  
consultation



Professional in-house facility management company  
with dedicated customer care helpline number for hassle-free living



## COMPLETED PROJECTS (RESIDENTIAL)

### Elite

2 & 3 BHK APARTMENTS & PENTHOUSES  
NEW SANGANER ROAD, JAIPUR

### Panorama

2 & 3 BHK APARTMENTS & PENTHOUSES  
JAGATPURA, JAIPUR

### Panache

2 & 3 BHK HIGH-END LUXURY APARTMENTS & PENTHOUSES  
JAGATPURA, JAIPUR

### Nirvana II

2 BHK APARTMENTS & PENTHOUSES  
AJMER ROAD, JAIPUR

### Desire

1, 2 & 3 BHK APARTMENTS  
AJMER ROAD, JAIPUR

### Nirvana

2 & 3 BHK LUXURY APARTMENTS & PENTHOUSES  
AJMER ROAD, JAIPUR

### Kopal

3 BHK AFFORDABLE VILLAS  
JAGATPURA, JAIPUR

### Florenza

2 & 3 BHK APARTMENTS  
PATRAKAR COLONY, MANSAROVAR EXT., JAIPUR

### Fountain Square

2 & 3 BHK APARTMENTS & PENTHOUSES  
JAWAHAR CIRCLE, JAIPUR

### Iris

APARTMENTS & PENTHOUSES  
NEW SANGANER ROAD, JAIPUR

### City Ville

3 & 4 BHK INDEPENDENT LUXURY VILLAS  
JAGATPURA, JAIPUR

### Uday

2 BHK APARTMENTS  
JAGATPURA, JAIPUR

### Elanza

2 & 3 BHK APARTMENTS & PENTHOUSES  
NEAR MANSAROVAR, JAIPUR

### Studio Panache

STUDIO, 1 & 2 BHK APARTMENTS  
JAGATPURA, JAIPUR

### Bellevista

2 & 3 BHK APARTMENTS  
JAGATPURA, JAIPUR

## COMPLETED PROJECTS (COMMERCIAL)

### Crystal Palm

COMMERCIAL COMPLEX  
C-SCHEME, JAIPUR

### Crystal Court

COMMERCIAL COMPLEX  
MALVIYA NAGAR, JAIPUR

### Warehouse

COMMERCIAL COMPLEX  
AJMER ROAD, JAIPUR

### Triniti

COMMERCIAL COMPLEX  
NEW SANGANER ROAD, JAIPUR

### Crystal Mall

COMMERCIAL COMPLEX  
BANI PARK, JAIPUR

## ON-GOING PROJECTS

### Mansion Royal

3, 4 & 5 BHK RESIDENCES  
OPP. AIRPORT (TERMINAL 2)

### Windchimes

2,3 & 4 BHK MANAGED FARM MANSIONS  
AJMER ROAD

### Shubh Nilay

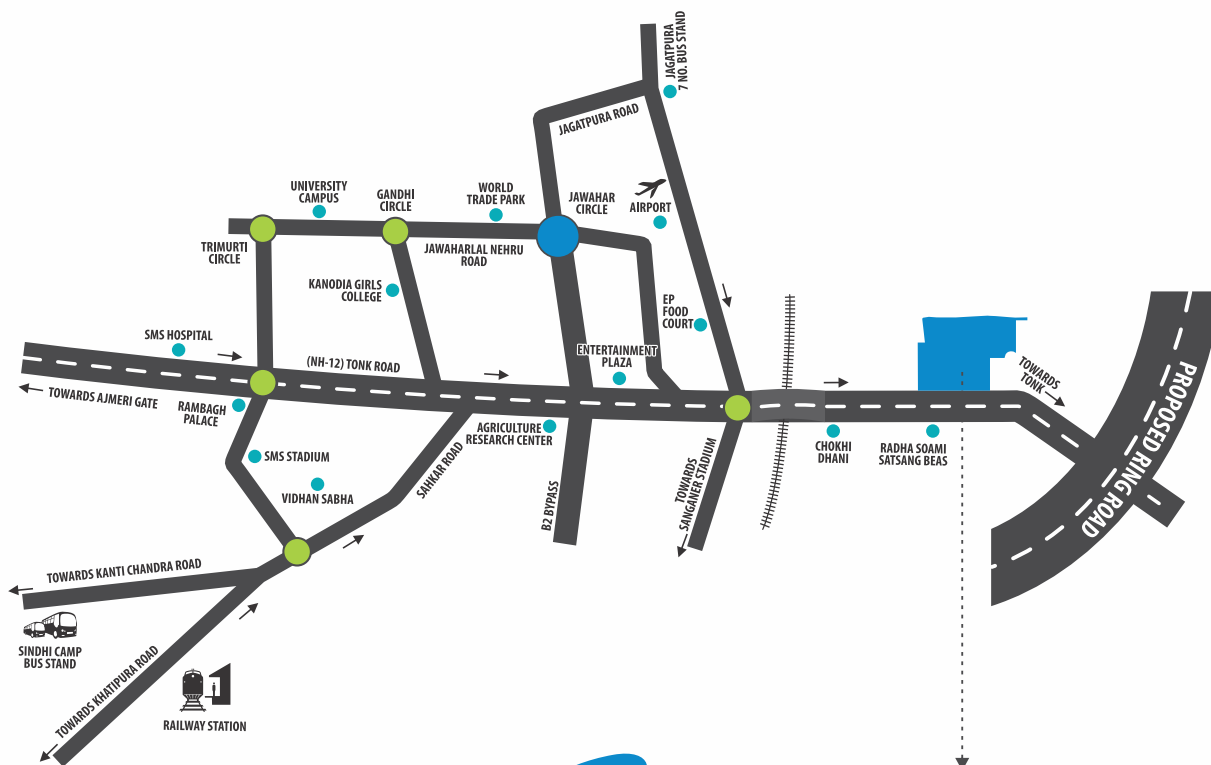
2 & 3 BHK APARTMENTS  
OPP. DPS, 2 MINS. FROM AJMER ROAD, JAIPUR

### Shubh Nilay

3 BHK PREMIUM VILLAS  
OPP. DPS, 2 MINS. FROM AJMER ROAD, JAIPUR



## ICONIC LANDMARK



### DISTANCE CHART

Chokhi Dhani	4 Mins	Narayana Hrudayalaya Hospital	10 Mins	Fortis Hospital	20 Mins
Sarla Bihari Temple	2 Mins	Jaipur International Airport	20 Mins	Hotel Marriott	15 Mins
Bombay Hospital	10 Mins	Gandhi Nagar Railway Station	20 Mins	World Trade Park	20 Mins
Hotel Crown Plaza	7 Mins	Entertainment Paradise	15 Mins	Educational Institutes	5-7 Mins



**MAHIMA GROUP**  
Committed to Excellence

#### MAHIMA REAL ESTATE PVT. LTD.

CORP. OFFICE: 4th Floor, Crystal Palm, 22 Godam Circle, Sahkar Marg, Jaipur-302001, Rajasthan (INDIA)  
+91 141 4050606 | marketing@mahimagroup.org | www.mahimagroup.com

Disclaimer: This brochure is not a legal document and just describes the developer's intended conceptual plan. Specifications and details provided are tentative and may change at sole discretion of developer and/ or the architects.  
The finance for completion of The Mahima Sansaar Phase-I Project has been provided by the SWAMIH Investment Fund I, an Alternate Investment Fund sponsored by Government of India and managed by SBICAP Ventures Limited. SWAMIH Investment Fund I has a first charge and mortgage on this Project.